



HIRTH 2703 Carbureted - 55 hp



The 2703 V is an air cooled, piston controlled 2-cylinder-inline-2-stroke engine with one or two carburetors and Nikasil coated cylinders. It has one of the highest power to weight ratio available on the 50 HP engine market. Ideally suited for Ultralights, hovercraft, light experimental aircraft and all applications where weight is an issue.

Factory recommended TBO is rated at 1000 hours at 75% power. The warranty of the crank shaft is 3 years.

Technical Data	
Specifications subject to change without prior notice	
Type:	Two cylinder two stroke (Inline)
Displacement:	521 cm ³ (31.79 cu in)
Stroke:	64mm (2.52 in)
Bore:	72mm (2.83 in)
Max. Performance:	38.2 kW (52 HP at 6500 rpm)
According to DIN 70020	40.2 kW (55 HP at 6200 rpm)
	Specification with fan cooling
Max. Torque:	60 Nm (44.2 ft.lb) at 5700 rpm 67 Nm (49.4 ft.lb) at 5600 rpm
Carburation:	2 slide carburetor (Bing Size 54)
Ignition System:	CDI
Generator Power:	250W, 12V
Cooling:	Fan cooling
Weight:	31 kg (68.4lb)
Starting Device:	Recoil starter
Running direction:	Counter-clockwise, view to output shaft
Fuel mixture:	Mixture 1:50, 2-stroke-oil, fuel min. 95 octane (RON)

HIRTH ENGINE SETTING VALUES

55 HP Engine	Fan cooled engine
Engine	55HP Fan Cooled (FC)
Ign. Timing @ 2000 Carbureted	16 ° BTC
Spark Plug Heat VI *	280
Spark Plug Gap	0.020-0.024
No. of Carburetors	Two
Carburetor ID #	Bing 54 Carburetor (38mm)
Main Jet	160
Idle Jet	45
Mixture Adjustment Screw	1 Turn Out
Jet Needle	6P2 Position 1
Needle Jet	2.72
Needle Position	1
Do not exceed RPM	5800
Peak HP RPM	5500
HP (4i Peak RPM	55
Peak Torque RPM	5000
Peak Torque Ft. Lb.	53.2
Maximum CHT	535 ° F
Maximum EGT @ full power	1256 ° F
Maximum EGT @ cruise RPM	1330 ° F
Spark Plug *	
Compression Pressure	120 PSI

* Optional Plugs : NGK BR 8 HS
: Champion RL86C or #830, L78C
: Nippon Denso W24 FSR-u
: Bosch W3AC

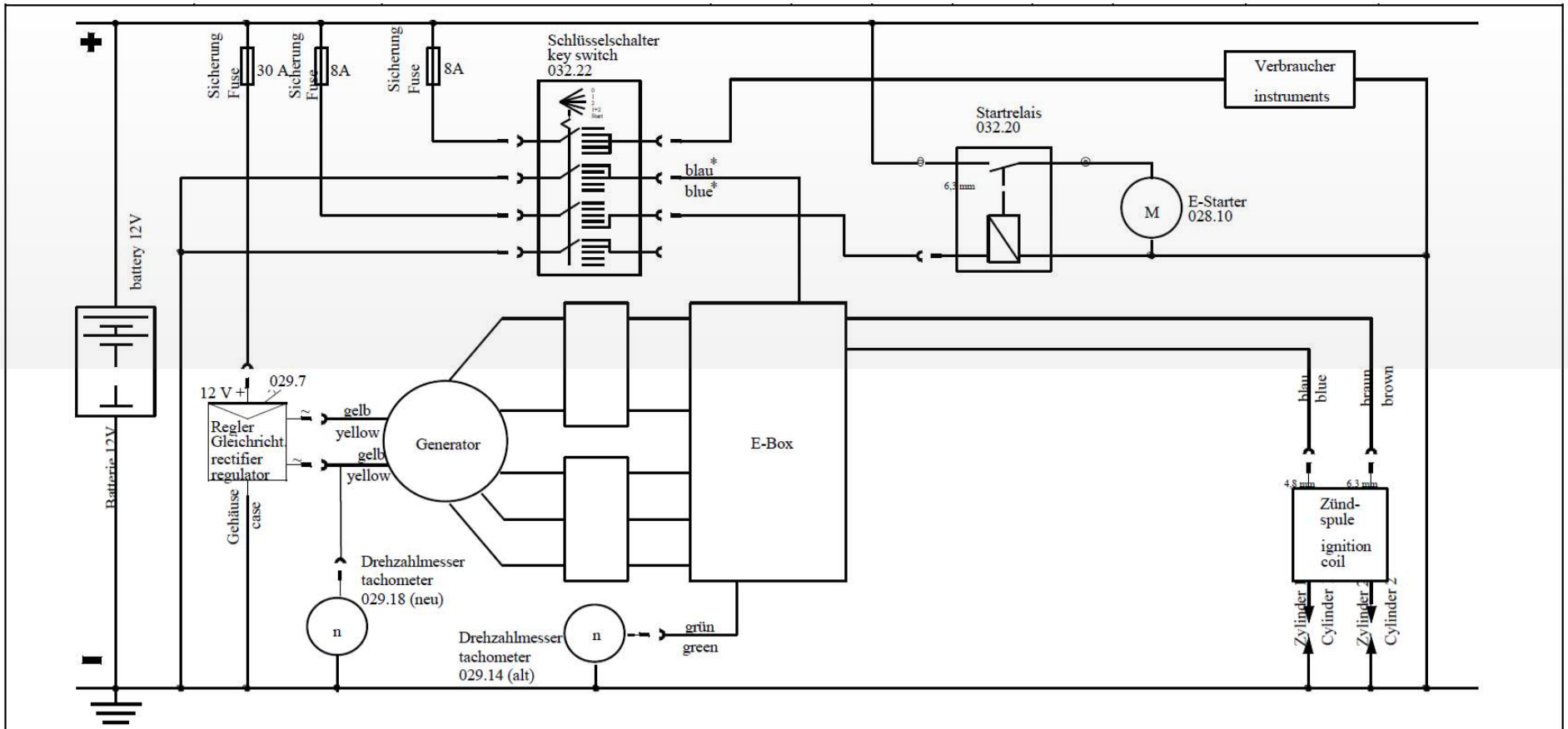
Useful Links:

Official Bing Manual: www.bingcarburetor.com/manual.html

Online Rebuild Manual: www.800-airwolf.com/pdf/ARTICLES/part%2052.PDF

Online Tuning Manual: www.ultralightnews.com/engine/troubleshooting/techtips/techtips2.htm

Online Cleaning Guide: <http://www.light-sport-aircraft.org/bing-54-carburetor-1.htm>



This wiring diagram is to be considered as a proposal for wiring

General size of line wire: 1,5 mm²

Size of line from/to E-Starter: 16 mm²

Rectifier-regulator mount on cooling body (ca. 250x200x5mm)

* Minimum distance to other current wires: 100 mm (4 in.)

f					Tag	Name
e					Gezeichnet:	04.07.00 Rögele
d					Geprüft:	04.07.00 Rögele
c					Schaltplan CDI – Einfachzündung PVL	
b					Wiring diagram – single ignition PVL	
a					F23	
Buchstabe	Anzahl	Änderung	Tag	Name	2702./03, /04, /05, /06, 3202/03, 3502/03	
		Rohteil-Nr.	Maßstab	Zeichnungs-Nr.		
				14 AA 104		

**55HP Cylinders
(2703)**

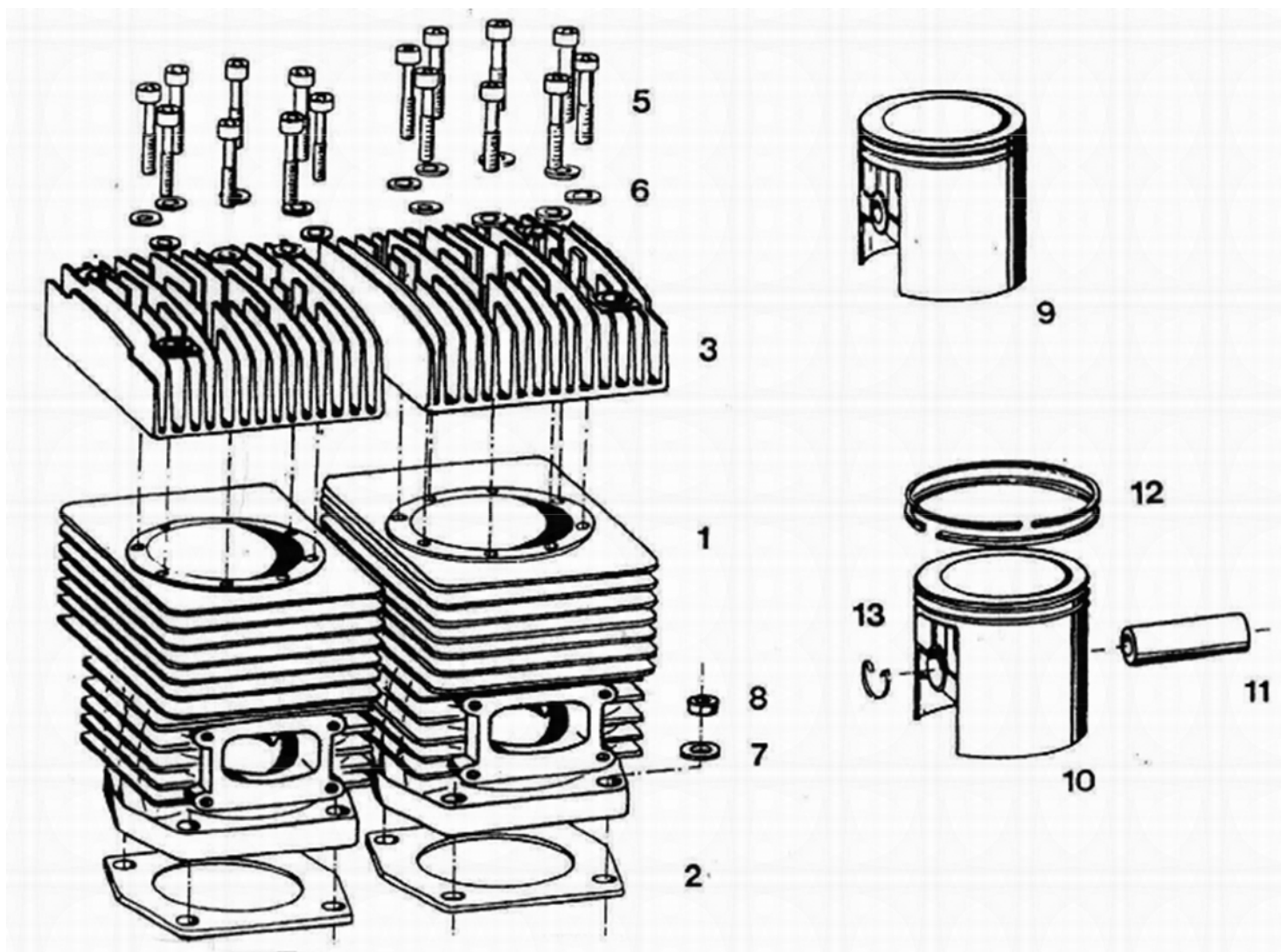


Fig. No.	Qty.	Description	Neoteric Part #	Remark / Notes
1	2	Cylinder	5860	
2	2	Cylinder base gasket	3433	
3	1	Cylinder head	6181	Single Ignition
5	16	Cylinder screw	6911	Torque = 11 Nm (8.1 ft-lb)
6	16	Washer	5994	
7	8	Washer	6162	
8	8	Hexagon head nut	6233	Torque = 23 - 26 Nm (17 - 19.2 ft-lb)
9	2	Piston set	5849	Includes Fig. 10, 11, 12, 13
10	2	Piston	7986	
11	2	Piston pin	7987	
12	4	Piston ring	6302	
13	4	Retaining ring	6301	

**Spare part list - 55 HP Single Ignition
Crankcase 2703**

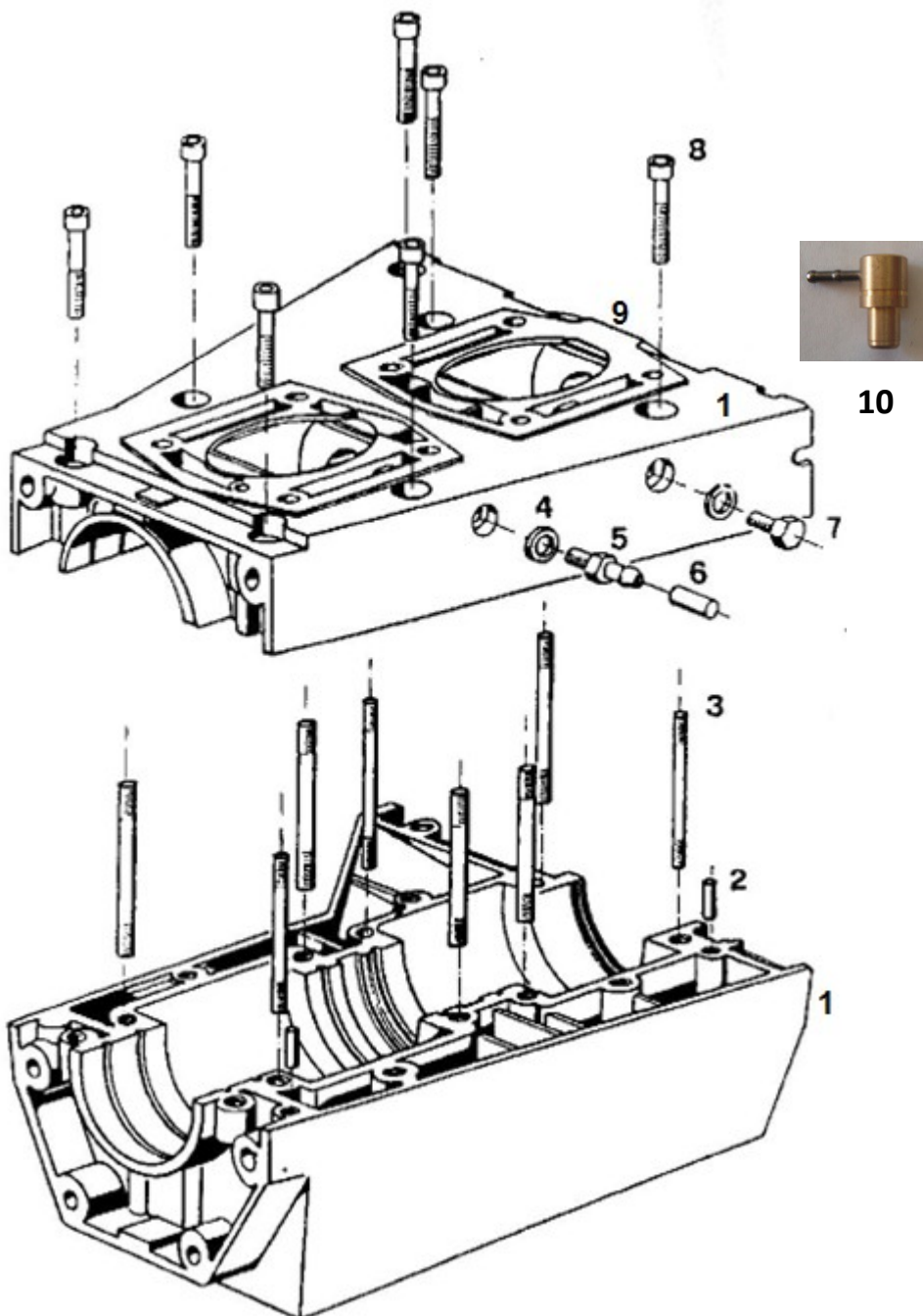


Fig No.	Qty.	Description	Neoteric Part #	Remark / Notes
1	1	Crankcase, complete	7935	Incl. Pos. 2, 3
2	2	Alignment pin	7936	
3	8	Stud screw	7163	Loctite 586
4	2	Sealing ring	5629	
5	1	Hose nipple	5630	
6	1	Rubber cap	7208	
7	1	Hexagon head screw	6927	
8	7	Cylinder screw	7937	Torque = 23 Nm (16.9 ft-lb) & Loctite 242
9	2	Cylinder Base Gasket	5455	See form 17749 for gasket set
10	1	Oil Injection Nipple	5490	Oil Inj. Engines With F.I.
		Rubber Gasket Sealant	7842	Use as crankcase gasket

Crankshaft 2703

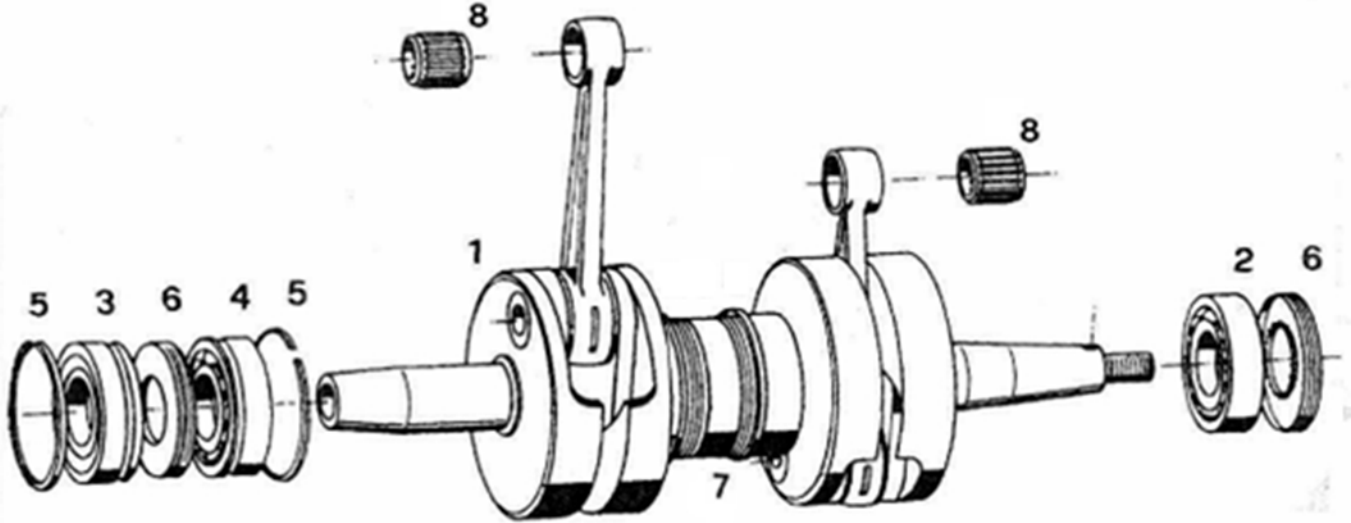


Fig. No.	Qty.	Description	Neoteric Part #	Remark / Notes
1	1	Crankshaft, complete	7911	Includes items 2 - 7
2	1	Deep groove ball bearing	5460	
3	1	Deep groove ball bearing	5461	
4	1	Deep groove ball bearing	5462	
5	2	Circlip	7912	
6	2	Shaft sealing ring	5453	
7	1	Space ring	7913	
8	2	Needle Bearing, Blue dot (#1)	7909	* Connecting Rods are Color-Coded with a Paint Dot on the Piston end. Engines built from 2010 onward also include a Number Code next to the Paint Dot. The coding corresponds to the correct Needle bearing size. (Approx 0.0003" [0.008mm] graduation between each size) Blue (#1) is the smallest and Green (#5) is the largest. Connecting rods with a Red (#3) dot are most common. If the paint dot is missing and no number code can be found, all bearings must be tried for the best fit.
		Needle Bearing, Yellow dot (#2)	6082	
		Needle Bearing, Red dot (#3)	6083	
		Needle Bearing, White dot (#4)	5464	
		Needle Bearing, Green dot (#5)	7910	

**55HP Exhaust Header Pipe
(Y-Pipe)**

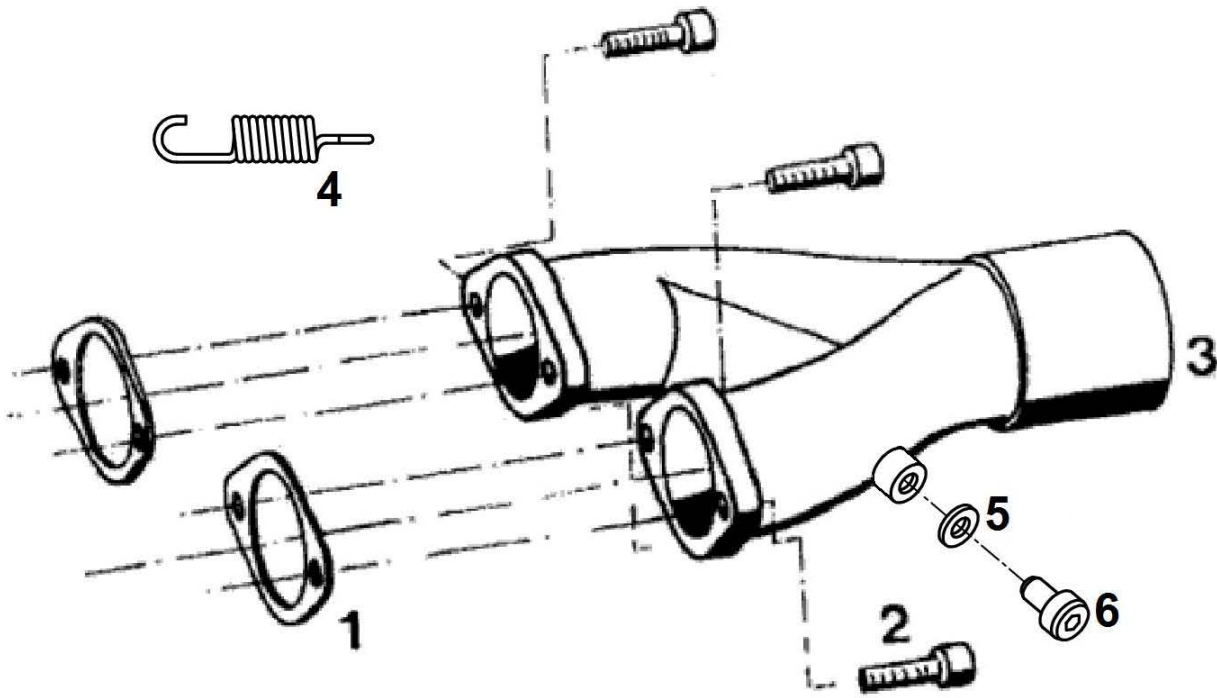
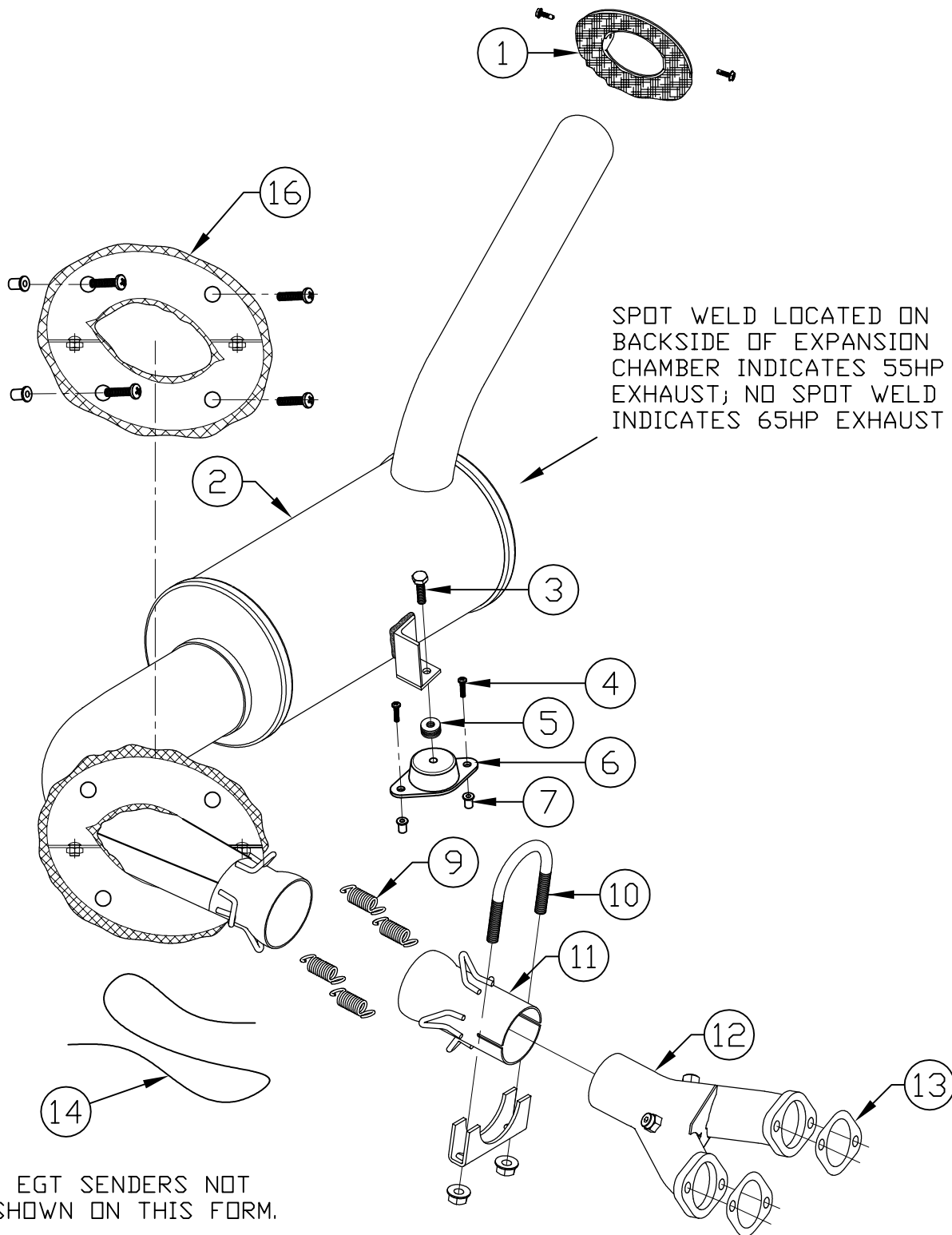
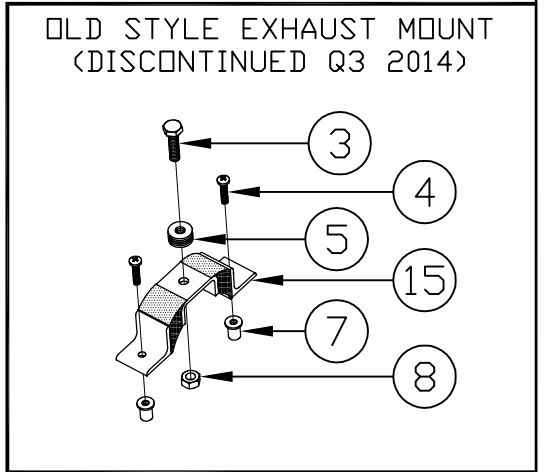


Fig. No.	Qty.	Description	Neoteric Part #	Remark / Notes
1	2	Exhaust gasket	5245	
2	4	Cylinder screw	6932	Torque = 23 - 26 Nm (16.9 - 19.2 ft-lb)
3	1	Exhaust manifold	5547	Prepared for temperature meas.
4	4	Exhaust Spring	5421	
5	2	Copper Washer	7077	EGT Plugs; used when no EGT is installed
6	2	M8x1x10 SHCS	6934	EGT Plugs; used when no EGT is installed




EGT SENDERS NOT SHOWN ON THIS FORM.

BILL OF MATERIAL		
REF.	PART #	DESCRIPTION
1	5408	EXHAUST, OUTLET FLANGE ASSY
2	5410	65HP EXHAUST
2	5479	55HP EXHAUST
3	2284	BOLT
4	2437	SCREW
5	2070	WASHER
6	9083	EXHAUST VIBRATION MOUNT
7	2551	WELL NUT
8	2451	NUT
9	5421	EXHAUST SPRING
10	5862	EXHAUST CLAMP
11	5546	55/65HP EXHAUST, STRAIGHT CONNECTOR
12	5548	65HP EXHAUST, Y-PIPE
12	5547	55HP EXHAUST, Y-PIPE
13	5245	55/65HP EXHAUST, HEADER GASKET
14	3023	SAFETY WIRE
15	5613	EXHAUST VIBRATION MOUNT (OLD STYLE)
16	9133	55/65HP BOLT ON EXTERNAL EXHAUST FLANGE ASSY



CJ	4	ADDED NEW EXHAUST FLANGE ASSY	3 APR, 2015
CS	3	UPDATE TO NEW MOUNT	11 NOV, 2014
CS	2	UPDATE TO STD II	12 MAR, 2013
CP		REV DESCRIPTIONS	18 JAN, 2013
SIG. NO.		REVISION	DATE


 1649 TIPPECANOE STREET
 TERRE HAUTE, INDIANA, U.S.A. 47807-2394
 TELEPHONE (812) 234-1120 FAX (812) 234-3217

DRAWN:	J. BARGO	NAME:	55/65 HP HIRTH EXHAUST SYSTEM
DATE:	22 JUL, 2009	NUMBER:	17713
		REV.:	4

Fan cooling system 2703



* Flat Belt Cooling Fan (Old Style)



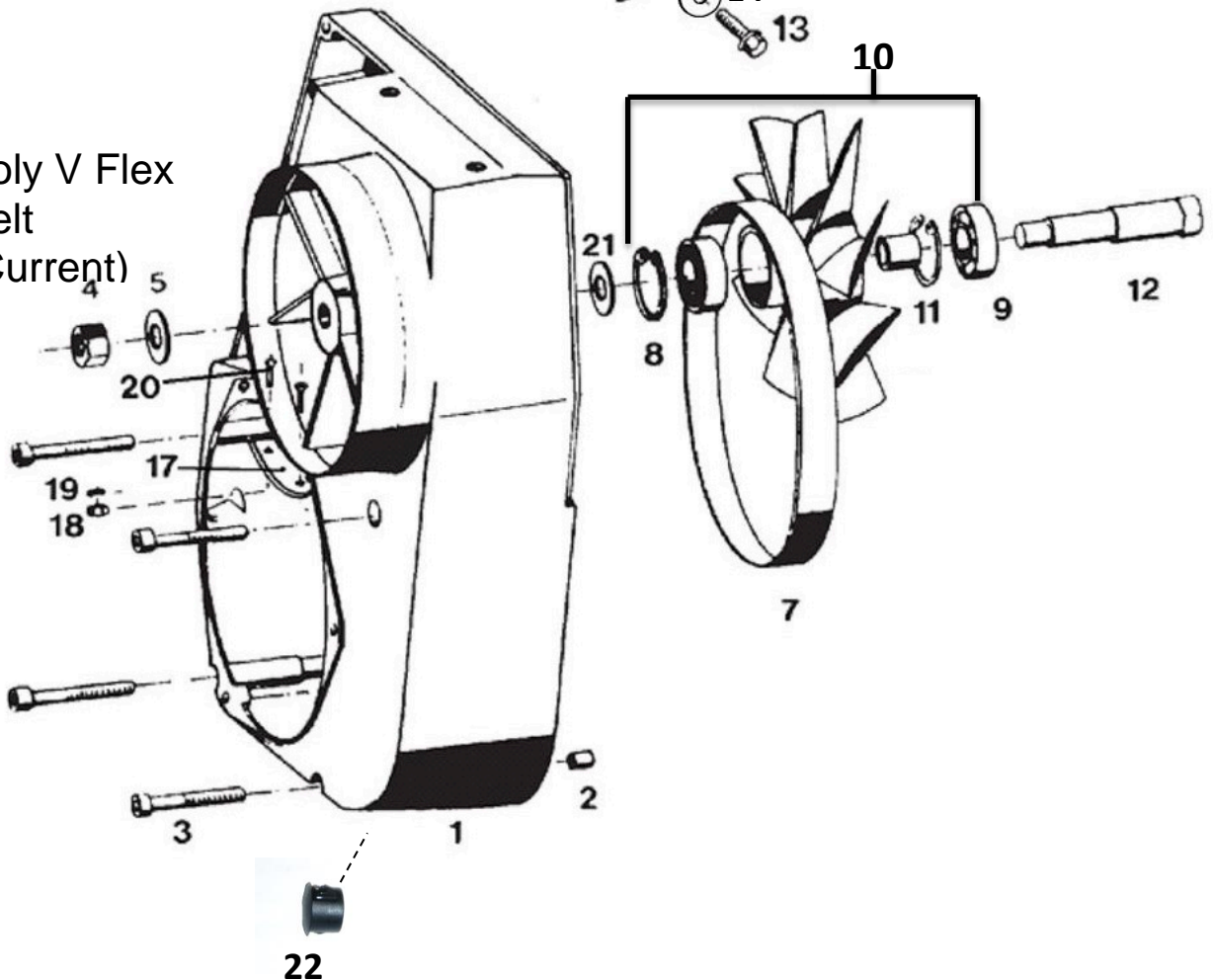
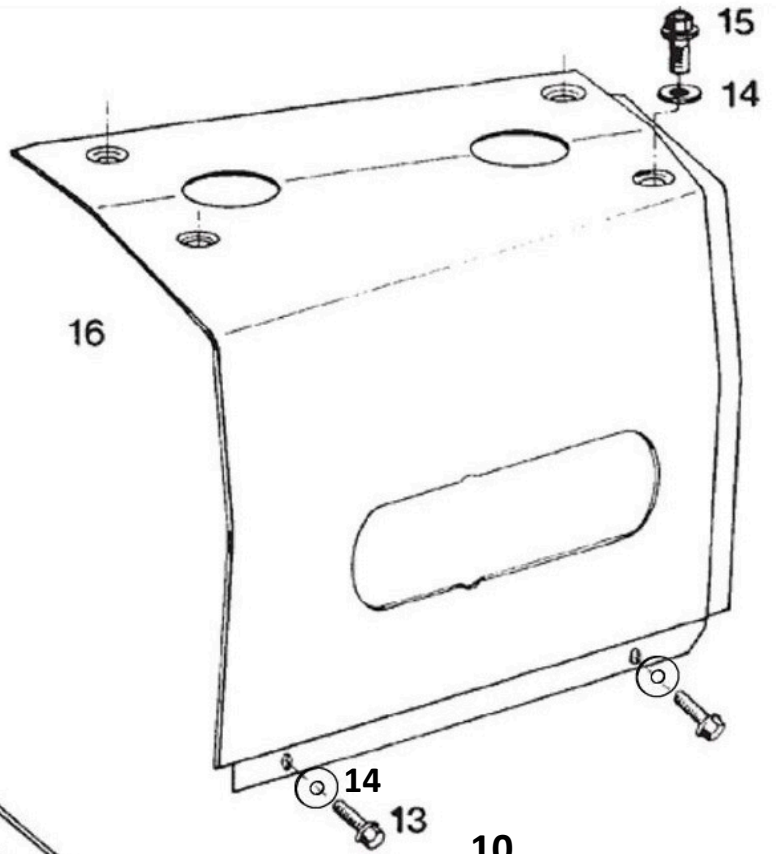
* Flat Belt (Old Style)



Poly V Belt Cooling Fan (Current)



Poly V Flex Belt (Current)



NOTE:
 If switching to poly belt, must change sprocket as well.
 Sprocket item #6 on form 17282 below
 Sprocket Part#6389

**55HP Cooling Fan System
(2703)**

Fig. No.	Qty.	Description	Neoteric Part #	Remark / Notes
1	1	Fan housing, complete	7938	Includes Fig No. 4, 5, 7, 8, 9, 10, 11, 12
2	3	Alignment sleeve	7939	
3	4	Cylinder screw	3258	Torque = 9.6 - 11 Nm (7.1 - 8.1 ft-lb)
4	1	Hexagon head nut	6855	Torque = 27 - 30 Nm (19.9 - 22.1 ft-lb)
5	1	Washer	6856	
7*	1	Flat belt	3409	*Used up to model year 2008 (Engine #901105 & Lower)
7	1	Poly V Flex belt	6390	Currently used, from 2008 onward (Engine #901106 & Higher)
8	2	Locking ring	7940	
9	2	Deep groove ball bearing	6887	
10*	1	Fan wheel Assy, Flat belt	3408 (5879 - rebuilt)	Incl. Pos. 8, 9, 11 *Used up to model year 2008 (Engine #901105 & Lower)
10	1	Fan wheel Assy, Poly V	6391	Incl. Pos. 8, 9, 11 Currently used, from 2008 onward (Engine #901106 & Higher)
-	-	Poly V Cooling System Conversion Kit	7457	Contains all parts required to convert engine from "Flat Belt" cooling system to "Poly V Belt" cooling system.
11	1	Bushing	7941	
12	1	Eccentric shaft	6857	
13	2	Thread screw	5987	
14	6	Washer	5996	
15	4	Thread screw	5997	
16	1	Air guide cowl	5346	
17	1	Metal plate	6183	
18	2	Hexagon head nut	2694	
19	2	Washer	7942	
20	2	Screw	2693	
21	1	Washer	7943	
22	1	Hole Plug	2449	Covers Hole In Housing

**55HP Starting Device
(2703)**

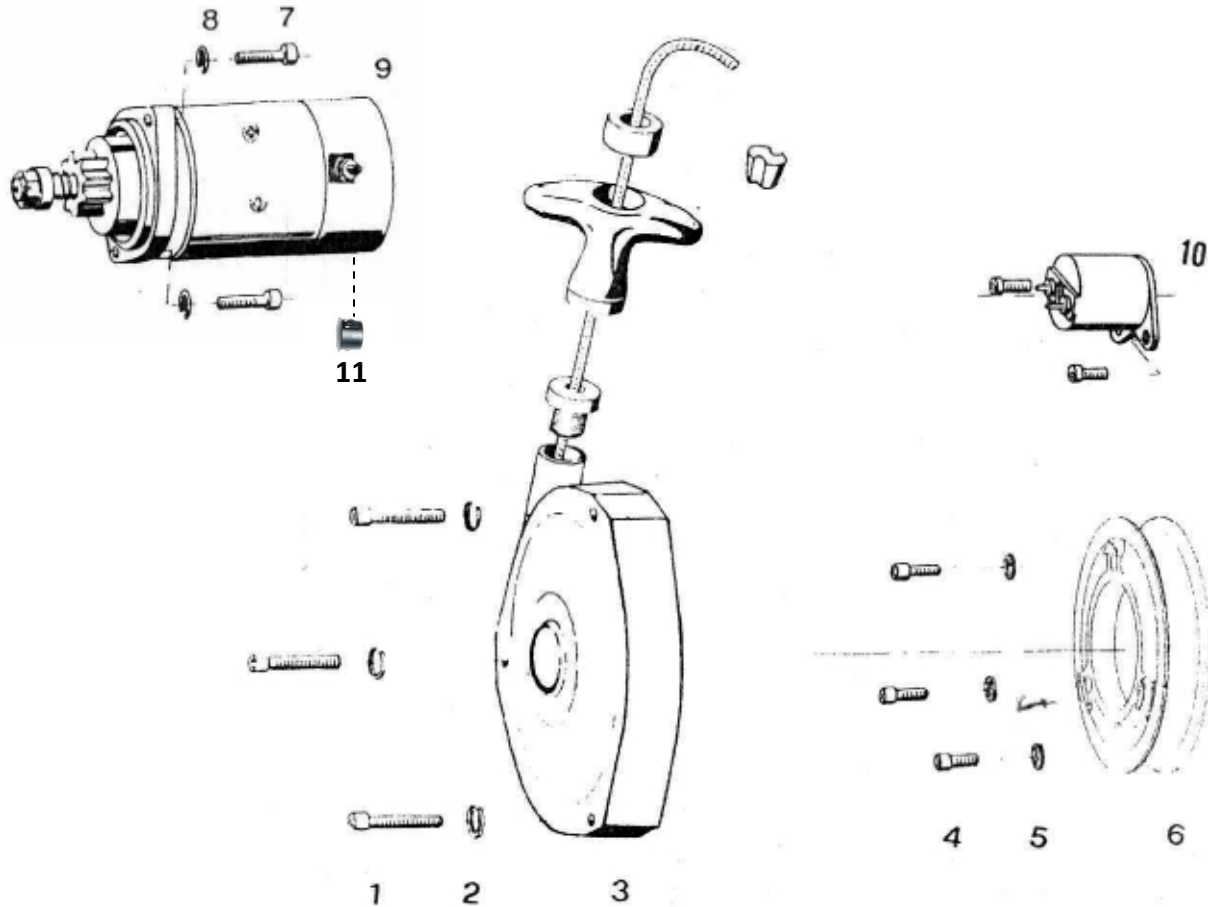


Fig. No.	Qty	Description	Neoteric Part #	Remark / Notes
1	3	Cylinder screw	6911	Torque = 9.6 - 11 Nm (7.1 - 8.1 ft-lb)
2	3	Spring ring	6940	
3	1	Starter, mounted	5267	
4	3	Cylinder screw	7944	Torque = 23 - 28 Nm (17 - 20.7 ft-lb)
5	3	Tab washer	5995	
6*	1	Driving dog with starter, Flat	6203	*Used up to model year 2008 (Engine #901105 & Lower)
6	1	Driving dog with starter, Poly-V	6389	Currently used, from 2008 onward (Engine #901106 & Higher)
7	2	Cylinder screw	2348	Torque = 23 - 28 Nm (17 - 20.7 ft-lb)
8	2	Tab washer	5995	
9	1	Electric Starter, Hirth	6982	Old starter 5545
-	1	Electric Starter, Alternative	7563	Replacement for Customers
10	1	Starter Solenoid	5417	
11	1	Hole Plug	9172	Plugs Drain Hole In Starter

55/65HP Ignition System

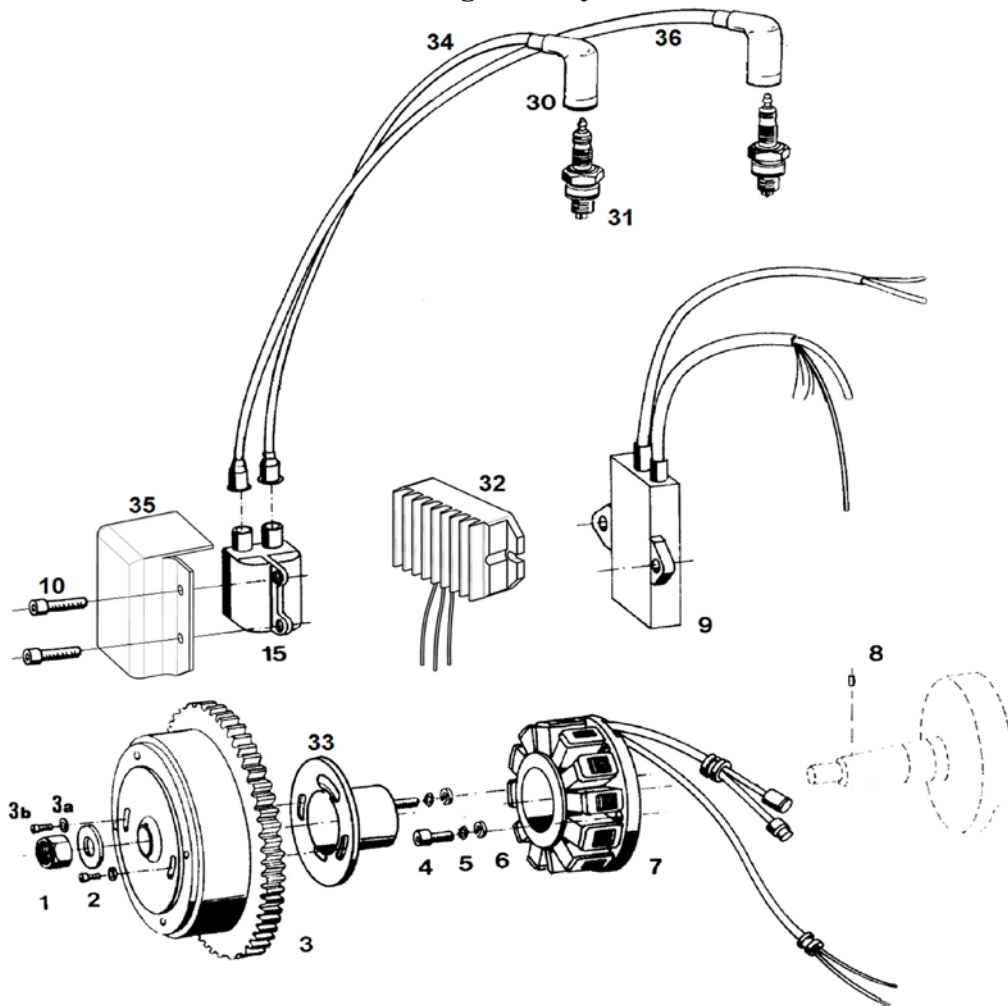


Fig. No.	Qty.	Description	Neoteric Part #	Remark/Notes
1	1	Hexagon head nut	6939	Torque = 140 - 150 Nm (103.3 - 110.6 ft-lb)
2	1	Washer	7196	
3	1	Flywheel with gear ring	7984	Includes fig. 3a, 3b, 33
4	2	Cylinder screw	7182	Neoteric does not stock
5	2	Washer	5994	
6	2	Washer	6936	Torque = 4 - 4.5 Nm (3 - 3.3 ft-lb)
7	1	Stator plate complete	5591	
8	1	Flywheel alignment pin	7985	
9	1	CDI - Box	5664	Mounted with silicone
10	2	Coil Mounting Screw	2469	
15	1	Ignition coil	5682	Includes fig. 15
30	2	Spark plug cap	5826	
31	2	Spark plug	5668	Do not mix spark plug types
32	1	Voltage Regulator	9876	
33	1	Magnet Support	5724	
34	1	Spark plug lead, short	5666	Wire only; does not include fig. 30
35	1	Coil spray guard	6683	
36	1	Spark plug lead, long	5665	Wire only; does not include fig. 30
-	-	Spark Plug lead set	5661	Includes fig. 30, 34, 36

NOTES:

1) 1 HALL EFFECT SENSOR ON PLATE GENERATES TIMING PULSE.

2) ALWAYS USE SYSTEM 1. SYSTEM 2 IS JUST A BACK UP.

BLACK: GROUND.

BROWN: HALL EFFECT POWER 10VDC.

RED: HALL EFFECT SIGNAL.

GRAY AND BLUE: CDI POWER.

DUAL SYSTEM

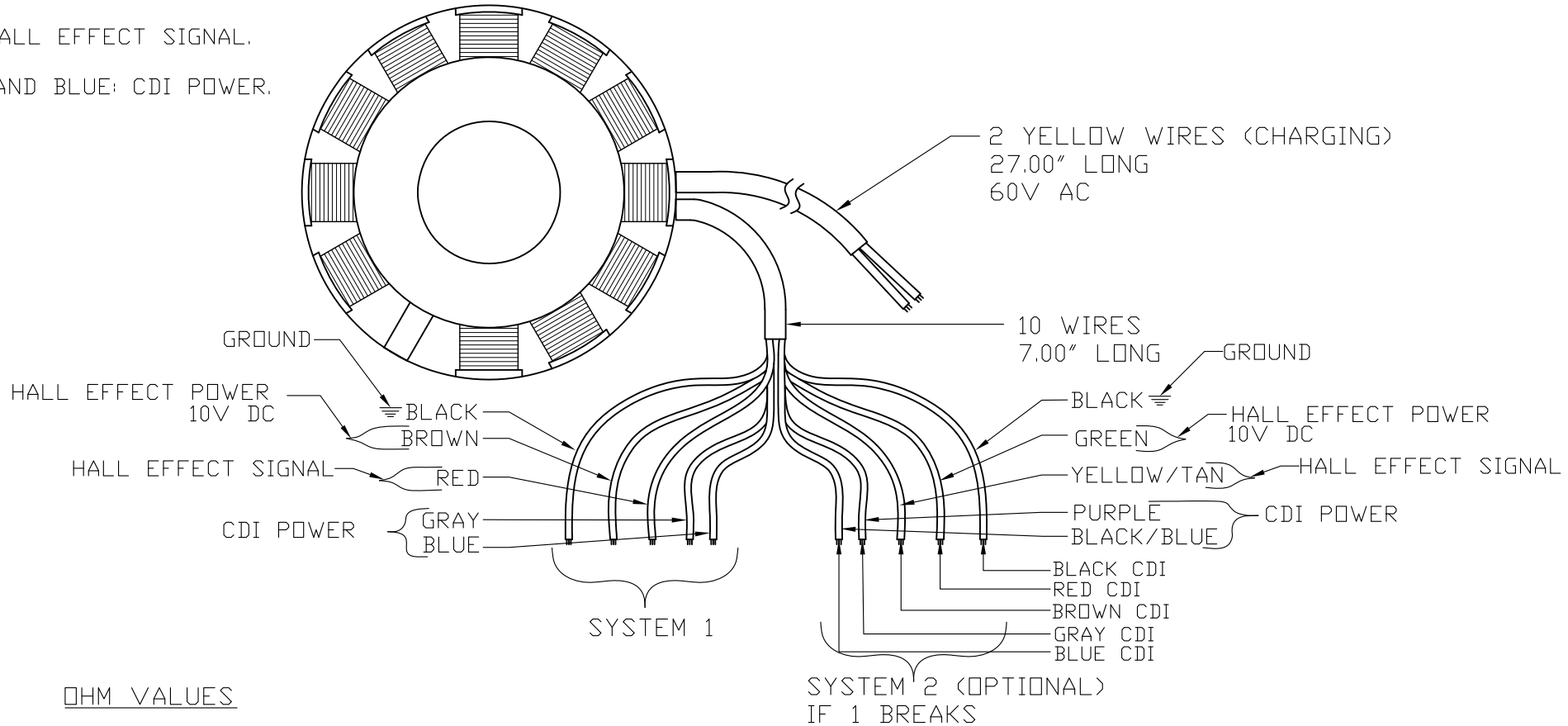
55/65HP MAGNETO

12 WIRES IN TOTAL

5 WIRES TO CDI.

5 WIRES REDUNDANT CDI (SYSTEM 2).

2 WIRE TO BATTERY CHARGE.



OHM VALUES

YELLOW & YELLOW: 0.4 ohm

BLACK & BLACK: 0.3 ohm

BLUE & GREY: 9.5 ohm

BLACK TO PLATE: 0.7 ohm

BILL OF MATERIAL			
REF.	PART #	DESCRIPTION	QTY.
X	XXXX	XXXX XXXX XXXX XXXX	X

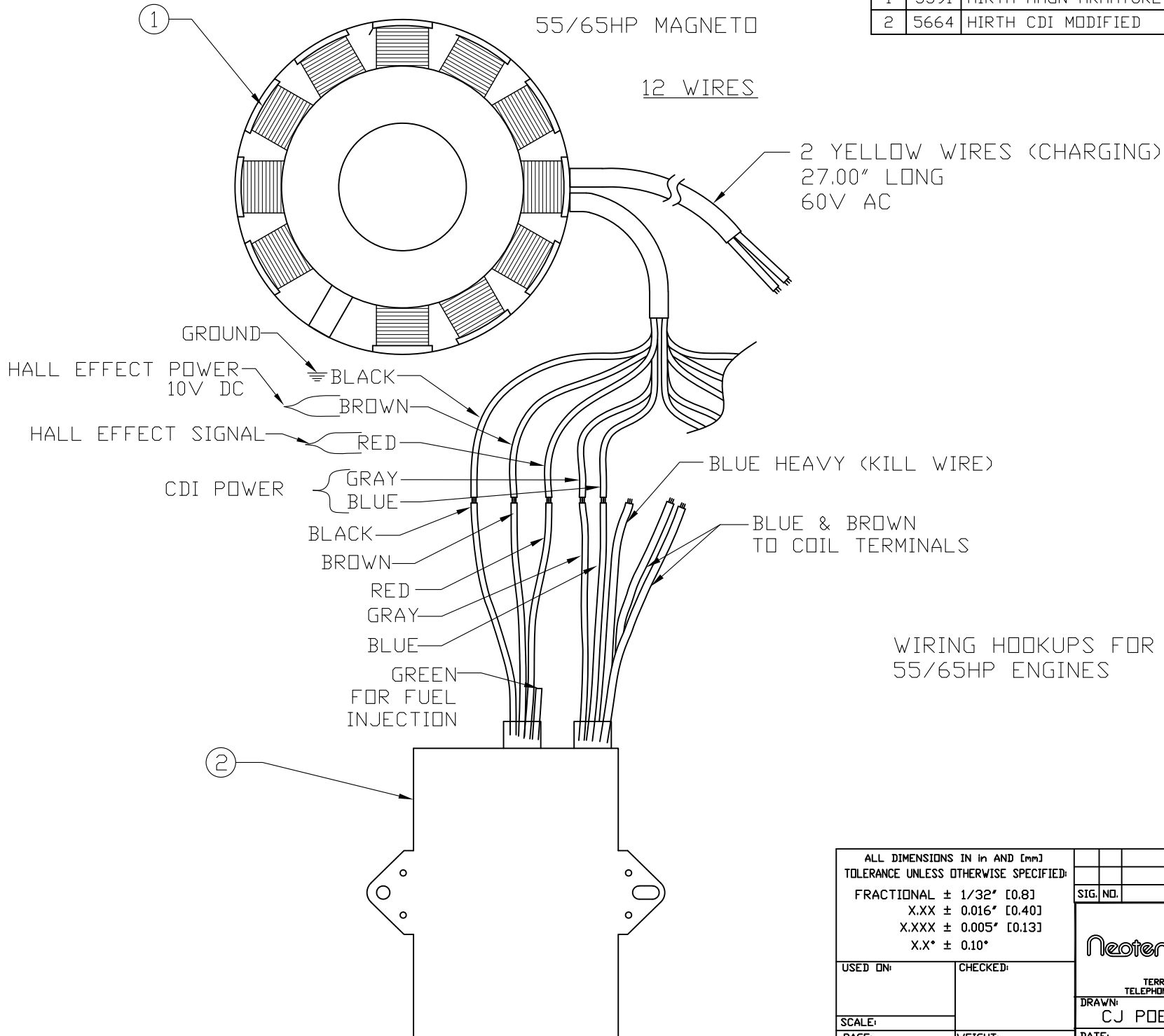
ALL DIMENSIONS IN IN AND [mm]			
TOLERANCE UNLESS OTHERWISE SPECIFIED:			
FRACTIONAL ± 1/32" [0.8]		SIG. NO.	
X.XX ± 0.016" [0.40]		REVISION	
X.XXX ± 0.005" [0.13]		DATE	
X.X* ± 0.10*			
USED ON:	CHECKED:	1649 TIPPECANOE STREET TERRE HAUTE, INDIANA, U.S.A. 47807-2394 TELEPHONE (812) 234-1120 FAX (812) 234-3217	
SCALE:		DRAWN:	NAME:
PAGE:		CJ POEHLEIN	HIRTH 55/65HP MAGNETO ARMETUR PLATE
1 OF 2	WEIGHT:	DATE:	NUMBER:
		14 APR, 2016	16644
			REV. 2

DUAL SYSTEM

55/65HP MAGNETO

12 WIRES

BILL OF MATERIAL			QTY.
REF.	PART #	DESCRIPTION	
1	5591	HIRTH MAGN ARMATURE PLATE & RESISTANCES	1
2	5664	HIRTH CDI MODIFIED	1



WIRING HOOKUPS FOR MAGNETO TO CDI
55/65HP ENGINES


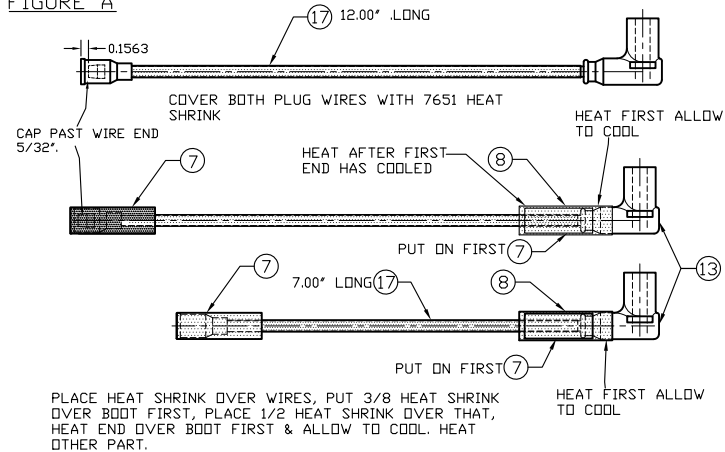
ALL DIMENSIONS IN IN AND [mm] TOLERANCE UNLESS OTHERWISE SPECIFIED: FRACTIONAL ± 1/32" [0.8] X.XX ± 0.016" [0.40] X.XXX ± 0.005" [0.13] X.X° ± 0.10°		SIG. NO.	REVISION	DATE
USED ON:	CHECKED:	 1649 TIPPECANOE STREET TERRE HAUTE, INDIANA, U.S.A. 47807-2394 TELEPHONE (812) 234-1120 FAX (812) 234-3217		
SCALE:				
PAGE: 2 OF 2	WEIGHT:			
DRAWN: CJ POEHLEIN		NAME: 55/65HP HIRTH MAGNETO ARMATURE PLATE		REV. 2
DATE: 28 JUNE, 2016		NUMBER: 16644		

FIGURE A



BILL OF MATERIAL				
REF.	PART #	DESCRIPTION	QTY.	DPT.
1	2209	TERM. FITTING	11	
2	2371	WIRE TIE	6	
3	2372	WIRE TIE	6	✓
4	2378	SEALANT/ADHESIVE, BLACK	20	
5	2520	DIELECTRIC GREASE	10	
6	2732	SOLDERING FLUX	2	
7	3191	HEAT SHRINK	8	
8	3192	HEAT SHRINK	4	
9	3305	PLASTIC LIQUID ELECTRIC COATING	10	✓
10	3431	SOLDER	1.5	
11	5334	HIRTH CDI UNIT 55/65HP	1	
12	5335	HIRTH COIL 55/65HP	1	
13	5661	SPARK PLUG WIRE ASSEMBLY PAIR	1	
14	5664	MODIFIED HIRTH CDI	1	✓
15	5682	MODIFIED HIRTH COIL	1	✓
16	7650	HEAT SHRINK W/ ADHESIVE, BLACK	10	
17	7651	HEAT SHRINK W/ ADHESIVE, BLACK	28.5	
18	9180	SALT WATER COIL/CDI PROTECTION BAG	1	
19	9181	COIL/CDI ASSEMBLY	1	

ORDER OF OPERATIONS

- 1) PUT HEAT SHRINK ON PLUG WIRES AS SHOWN IN FIGURE A.
- 2) EXTEND ALL WIRES AS SHOWN IN FIGURE B.
- 3) FIT TERMINAL FITTING ON WIRES AS SHOWN. * DO NOT FIT TERM. TO BROWN OR BLUE WIRE
- 4) CUT TABS OFF COIL USING BANDSAW. FIGURE C.
- 5) BOND COIL TO CDI AS SHOWN IN FIGURE D.
- 6) ROUTE BROWN AND BLUE WIRE AND SOLDER AS SHOWN IN FIGURE D.
- 7) FIT PLUG WIRES TO COIL & TIE WITH WIRE TIES.
- 8) GOOD SOLDERED TERMINALS OF COIL AS SHOWN IN FIGURE E.
- 9) PLACE IN BAG #9180.

FIGURE B

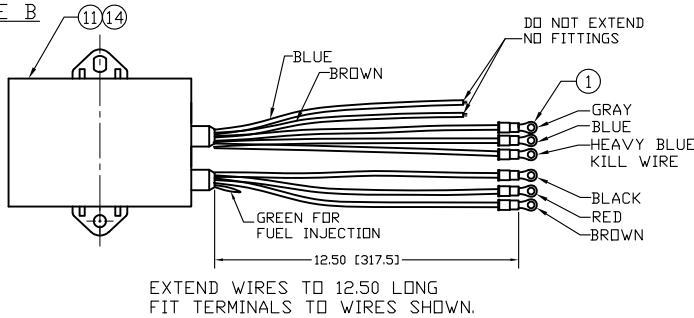
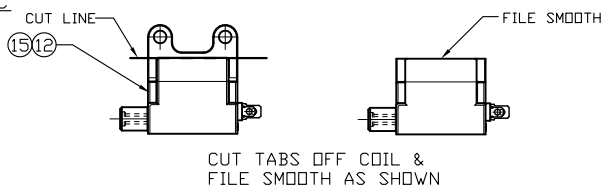


FIGURE C



ALL DIMENSIONS IN IN AND [mm]
TOLERANCE UNLESS OTHERWISE SPECIFIED

CJ 3	ADDED PAGE 3 TO SHOW HOOKUP		
SIG. NO.	REVISION	DATE	

FRACTIONAL ± 1/32" [0.8]
X.XX ± 0.016" [0.40]
X.XXX ± 0.005" [0.13]

USED ON: 3720 CHECKED: []

SCALE: [] WEIGHT: []

PAGE: 1 OF 3

Neoteric Hovercraft Inc.
1649 TIPPECANOE STREET
TERRE HAUTE, INDIANAPOLIS, 47607-2994
TELEPHONE: 824-1125 FAX: 824-3817

DRAWN: CJ POEHLIN NAME: HIRTH 55/65HP
COIL/COIL SALT WATER ASSEMBLY

DATE: 14 APR, 2017 NUMBER: 164613 REV: 3

FIGURE D

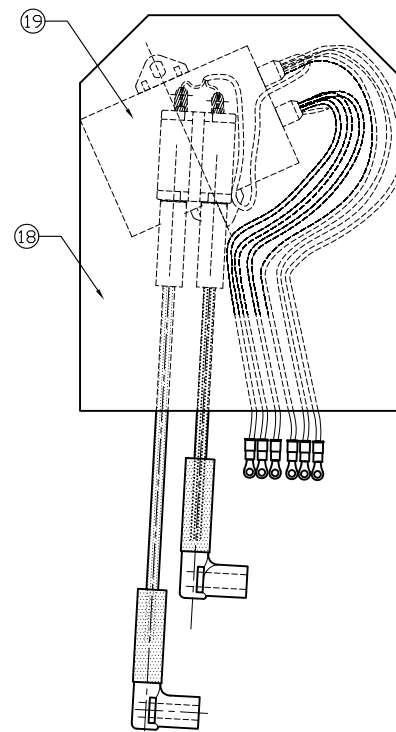
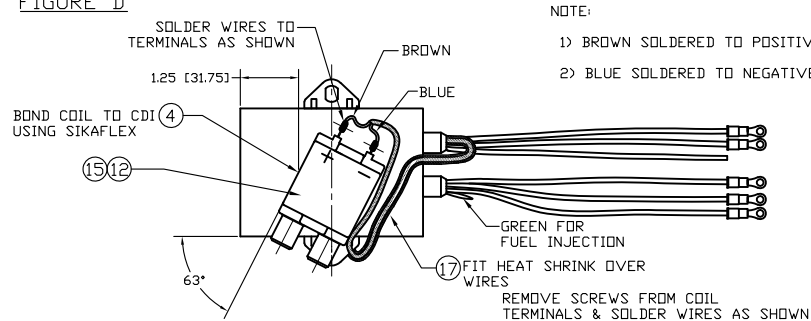
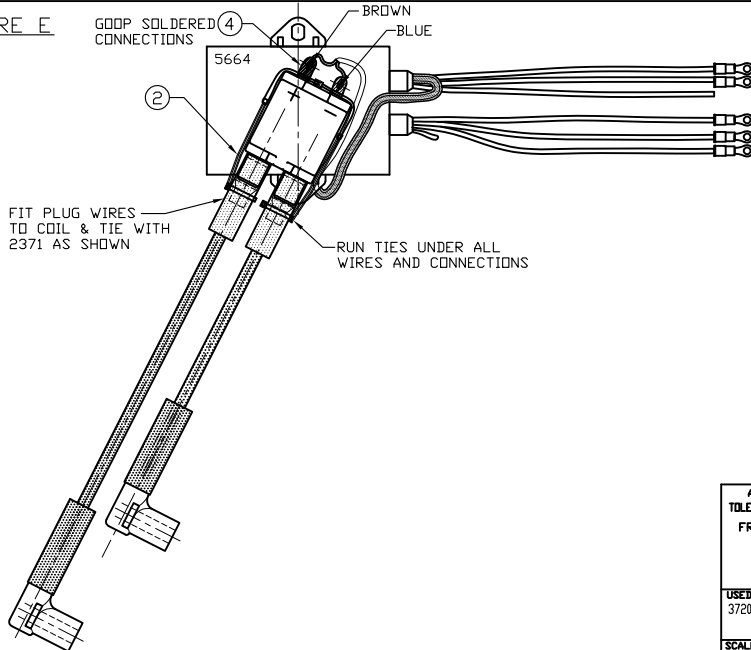


FIGURE E



ALL DIMENSIONS IN IN AND [mm]
TOLERANCE UNLESS OTHERWISE SPECIFIED

CJ 3	ADDED PAGE 3 TO SHOW HOOKUP		
SIG. NO.	REVISION	DATE	

FRACTIONAL ± 1/32" [0.8]
X.XX ± 0.016" [0.40]
X.XXX ± 0.005" [0.13]
X.X" ± 0.10"

USED ON: 3720 CHECKED: []

SCALE: [] WEIGHT: []

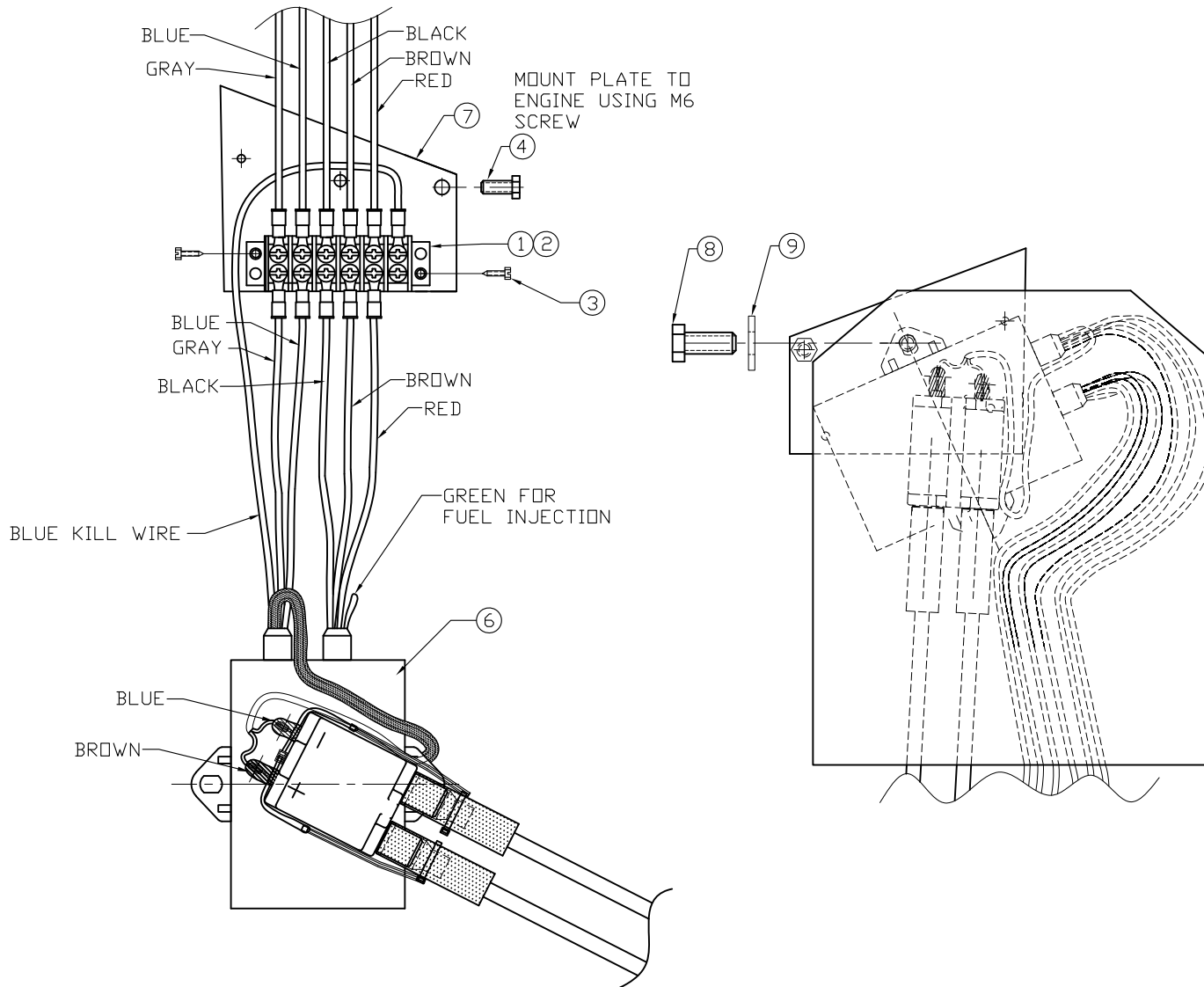
PAGE: 2 OF 3

Neoteric Hovercraft Inc.
1649 TIPPECANOE STREET
TERRE HAUTE, INDIANAPOLIS, 47607-2994
TELEPHONE: 824-1125 FAX: 824-3817

DRAWN: CJ POEHLIN NAME: HIRTH 55/65HP
COIL/COIL SALT WATER ASSEMBLY

DATE: 14 APR, 2017 NUMBER: 164613 REV: 3

WIRES FROM MAGNETO



BILL OF MATERIAL			
REF.	PART #	DESCRIPTION	QTY.
1	1365	TERMINAL BLOCK	1
2	2378	SEALANT/ADHESIVE, BLACK	6
3	2459	SCREW, SS	2
4	2144	HEX BOLT, SS	1
5	2372	WIRE TIE	2
6	9181	CDI/COIL ASSEMBLY	1
7	9182	CDI/COIL MOUNT PLATE SALT WATER MARINIZATION	1
8	2391	HEX BOLT, SS	1
9	2070	WASHER, SS	1

NOTE:

PART NUMBERS CALLED OUT ON PAGE 3 LISTED ON PAGE 3 BILL OF MATERIALS ONLY

NOTES:

- 1) PUT 2209 FITTING ON BLACK WIRE FROM ENGINE HARNESS, INSTALL ACROSS FROM BLUE KILL WIRE
- 2) USE BOLT & WASHER TO MOUNT BAG TO BACKSIDE OF PLATE AFTER PLATE IS MOUNTED TO COVER.

ALL DIMENSIONS IN IN AND [mm] TOLERANCE UNLESS OTHERWISE SPECIFIED		SIG. NO.	REVISION	DATE
USED ON: 3720	CHECKED:	 1649 TIPPECANOE STREET TERRE HAUTE, INDIANA, U.S.A. 47087-2394 TELEPHONE: 824-1188 FAX: 824-3217		
SCALE:	WEIGHT:			
PAGE: 3 OF 3		DRAWN: CJ POEHLIN	NAME: COIL SALTWATER INSTALLATION	REV. 3
		DATE: 14 APR, 2017	NUMBER: 16461	

Hirth 55HP Air Box Assembly

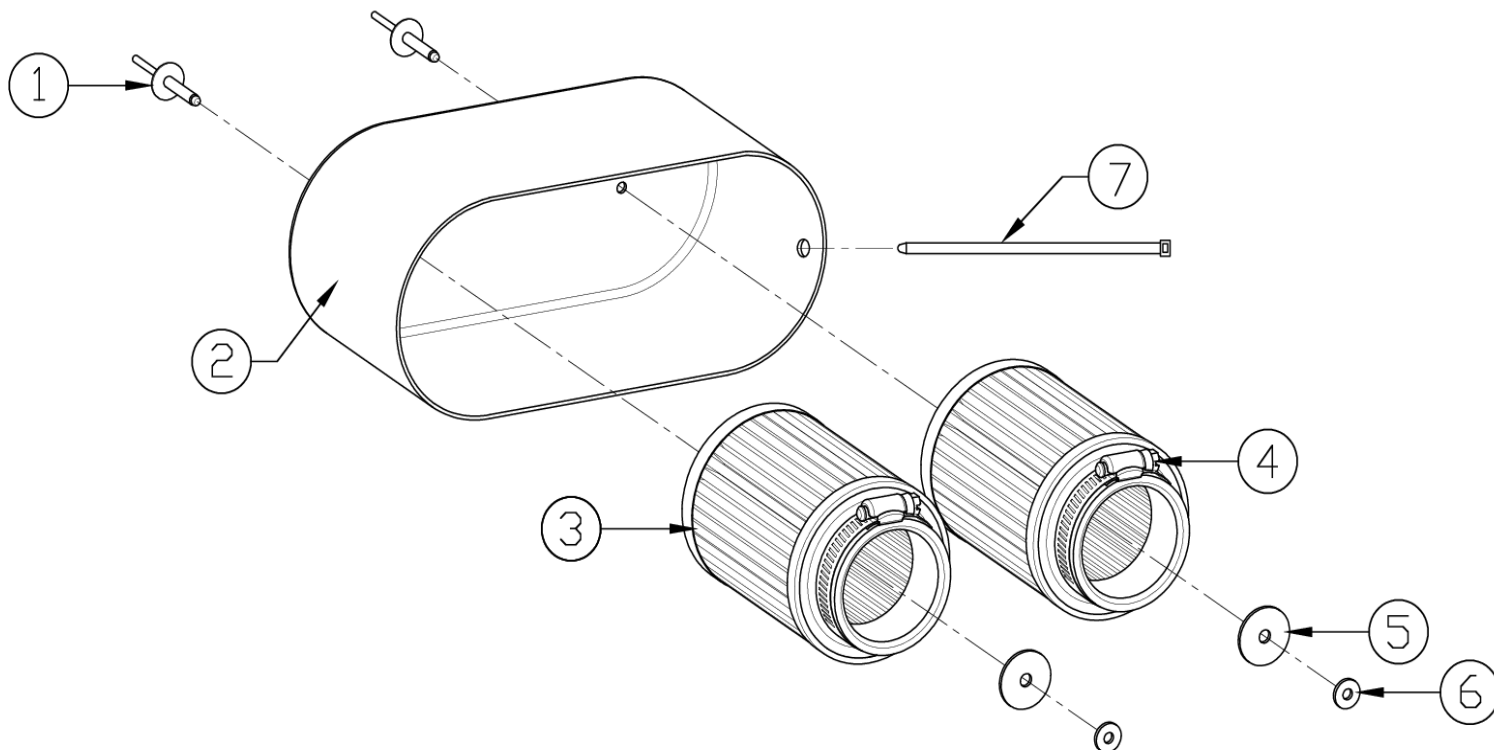


Fig. No.	Qty	Designation	Neoteric Part #	Remark
1	2	Rivet	2156	
2	1	Fiberglass Air Box, Carbureted	5584	
3	2	Air Filter	6622	Includes item 4
4	2	Hose Clamp	-	
5	2	Large Washer	2516	
6	2	Small Washer	2352	
7	2	Wire Tie	2371	Safety tie
-	-	Air Box Assembly, Carbureted	5583	Includes item 1 - 7 as shown above

**55HP Fuel Mixture, 2-Carb Sys
(2703)**

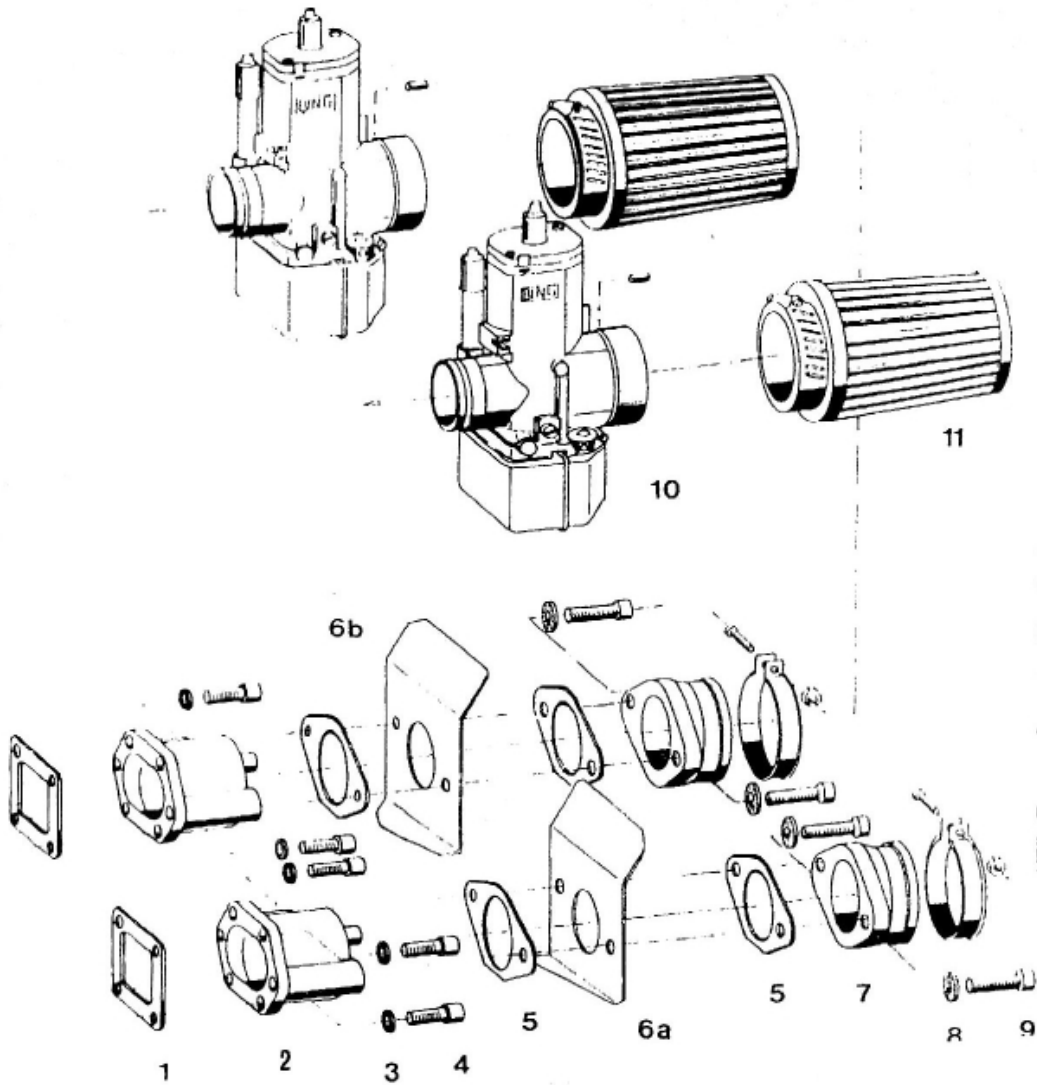
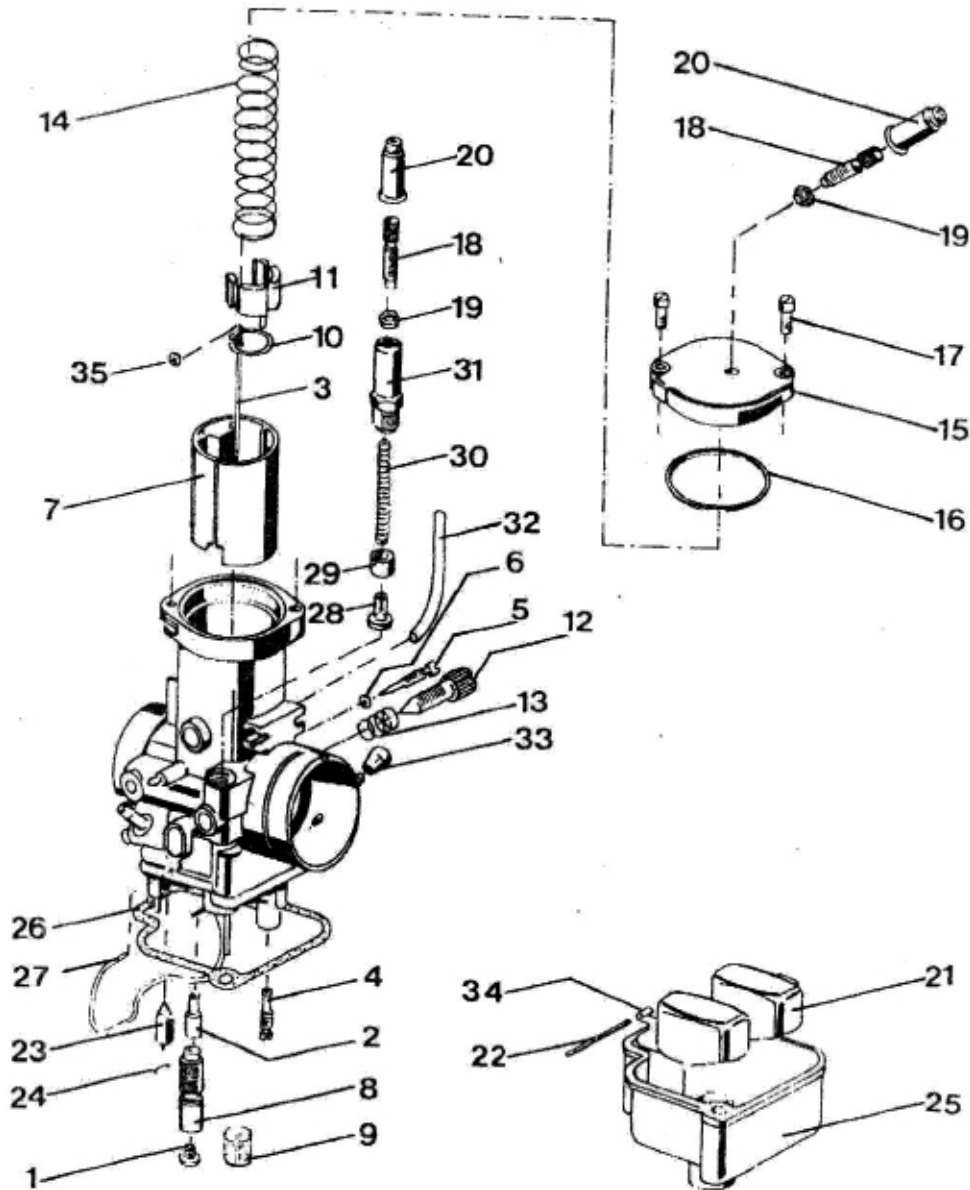


Fig. No.	Qty	Description	Neoteric Part #	Remark / Notes
1	2	Gasket	7949	
2	2	Intake manifold	7948	
3	8	Serrated lock washer	6902	
4	8	Cylinder screw	2292	Torque = 9.6 - 11 Nm (7.1 - 8.1 ft-lb)
5	4	Gasket	5454	
6a	1	Heat shield plate, right	7950	
6b	1	Heat shield plate, left	7951	
7	2	Intake Boot	6567	
8	4	Tab washer	7952	
9	4	Cylinder screw	7953	Torque = 23 - 28 Nm (17 - 20.1 ft-lb)
10	2	BING carburetor	5333	Main Jet:160, Idle Jet:45, Needle Jet: 2.72 Jet Needle 6P2 Pos:1, Air screw: 0.5-1
11	2	Air filter	6622	* See Form 16619 for Air filter system details

Carburetor 2703



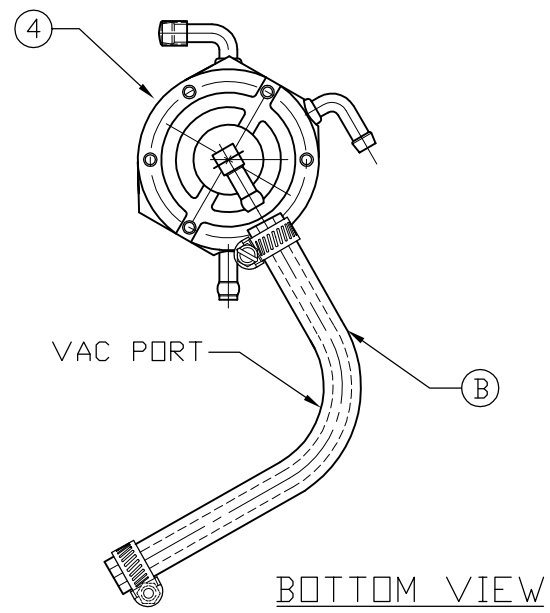
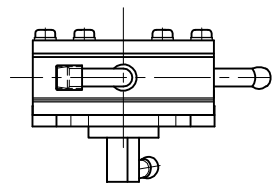
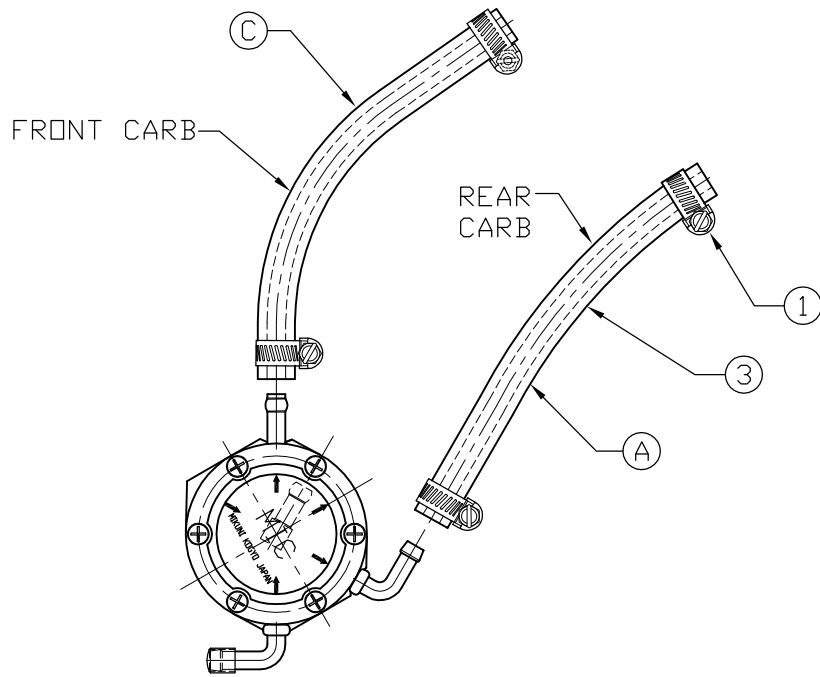
**55HP Hirth Bing Carburetor Parts
(2703)**

Fig. No.	Qty	Description	Neoteric Part #	Remark / Notes
1	1	Main jet	-	See form 16642 for all Bing Jets
2	1	Needle jet	-	
3	1	Jet needle	-	
4	1	Idle jet	-	
5	1	Idle Screw	7954	
6	1	Idle Screw O-Ring	7955	
7	1	Throttle slide	7956	
8	1	Mixture tube	7957	
9	1	Sieve Sleeve	7958	
10	1	Bracket plate	6974	
11	1	Spring Cup	7959	
12	1	Adjusting screw	7960	
13	1	Adjustment Screw Spring	7961	
14	1	Slide Spring	7962	
15	1	Cover plate	7963	
16	1	Cover Plate O-Ring	7964	
17	2	Cover Plate Screw	7965	
18	1	Adjusting screw	6105	
19	1	Nut	6106	
20	2	Socket	6113	
21	2	Float	7966	
22	1	Float Pivot Pin	7967	
23	1	Float Needle	7968	
24	1	Float Needle Clip	7969	
25	1	Float chamber	7973	
26	1	Bowl Gasket	7974	
27	1	Bowl Clip	7975	
28	1	Choke Piston	7976	
29	1	Choke Sleeve	7977	
30	1	Choke Spring	7978	
31	1	Choke housing	7979	
32	2	Vent Tube	7980	
33	1	Rubber cap for primer connection	7981	
34	1	Float chamber	7982	
35	1	Jet Needle O-ring	7983	
-	-	Rebuild Kit	6286	Includes fig. 6, 9, 16, 20, 22, 23, 26

**55HP Hirth Bing Carburetor Jets
(2703)**



Fig. No.	Qty	Description	Neoteric Part #	Remark / Notes
1	1	Main Jet, 148	5759	
		Main Jet, 155	5474	
		Main Jet, 158	5473	
		Main Jet, 160	5876	
		Main Jet, 162	5890	
		Main Jet, 165	5891	
		Main Jet, 170	6196	
		Main Jet, 180	6195	
2	1	Needle Jet, 2.62	5757	
		Needle Jet, 2.68	5758	
		Needle Jet, 2.7	5725	
		Needle Jet, 2.72	6177	
3	1	Jet Needle, 6P2	6976	
4	1	Idler Jet, 45	6519	
		Idler Jet, 50	6521	



BILL OF MATERIAL			
REF.	PART #	DESCRIPTION	QTY.
1	2203	HOSE CLAMP, SS	6
2	2371	WIRE TIE	1
3	3000	FUEL HOSE, BLACK	38.25
4	5465	FUEL PUMP	1



REF.	LENGTH
A	15.00
B	12.50
C	10.75

ALL DIMENSIONS IN IN AND [mm]
TOLERANCE UNLESS OTHERWISE SPECIFIED:

X.XX ± 0.016" [0.40]
X.XXX ± 0.005" [0.13]

SIG. NO.	REVISION	DATE

REQUIRED: CHECKED:

SCALE: EW3 12-JAN-2015
 CJ173 12-JAN-2015

PAGE: 1 OF 1 WEIGHT:

Neoteric Hovercraft Inc.
1649 TIPPECANOE STREET
TERRE HAUTE, INDIANA, U.S.A. 47807-2394
TELEPHONE (812) 234-1120 FAX (812) 234-3217

DRAWN: CJ POEHLEIN NAME: BING FUEL PUMP ASSY.
DATE: 7 MAR, 2013 NUMBER: 16643 REV: 2

**55HP Gasket Set
(2703)**

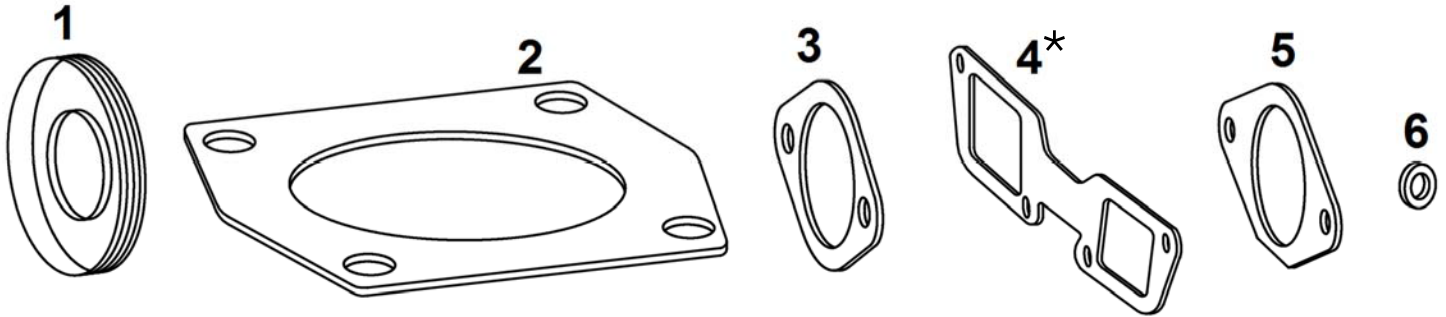
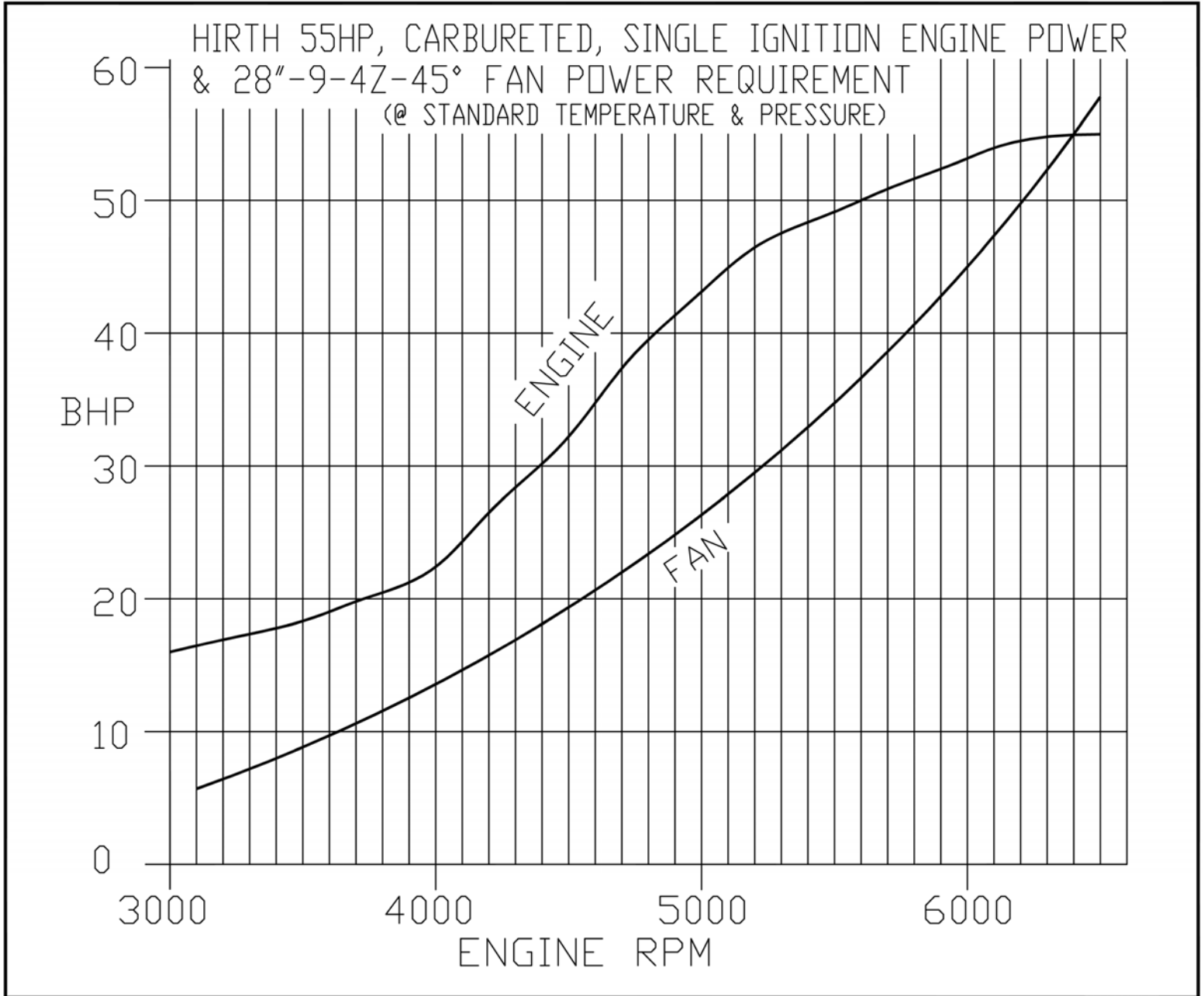


Fig. No.	Qty.	Description	Neoteric Part #	Remark / Notes
-	1	55HP Gasket Set	5861	Includes Fig 1, 2, 3, 4, 5, 6
1	2	Crankshaft Seal	5453	
2	2	Cylinder Base Gasket	3433	
3	2	Exhaust Outlet Gasket	5245	
4*	1	<i>Single Carb Intake Gasket</i>	-	<i>* Not Used</i>
5	2	Intake Boot Gasket, Oval	5454	
6	2	Vacuum Nipple Gasket Washer	5629	Not Used

55HP Hirth Engine/Fan Power Requirement Graph



55HP Fan Altitude Performance Graph

